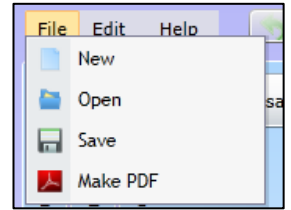


How to use knittingpatterns.is

Knittingpatterns.is is a website where users can design Icelandic Lopi sweater in different sizes. They are shaped by simple yoke, knitted bottom up and in the round.

Make a new pattern:

Click on „File“. Click on „New“ in the top left corner of your screen. A new window where you can select options for the new sweater pattern will then open.



Select measurements:

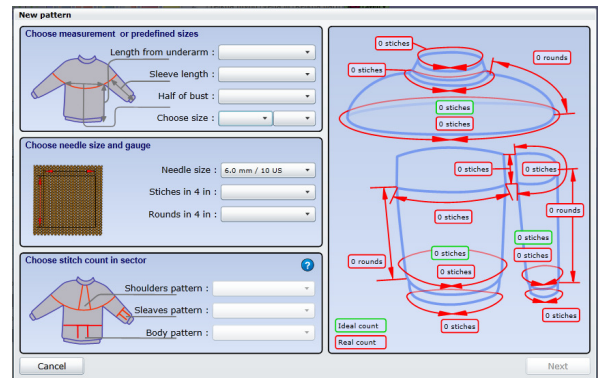
Start by selecting the length measurements. You can either use individual measurements or select a predetermined size.

Select needle size and gauge:

Next you select needle size and the gauge you get with the selected needles and yarn.

Select the number of stitches in each pattern repeat:

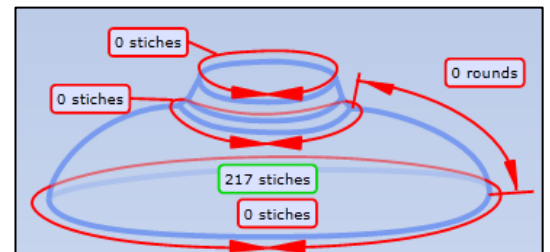
Next you select how many stitches you want to have in each repeat of the yoke pattern. When you click on the dropdown list, you can see the available choices. The numbers in the red rectangle show how many stitches will be in each pattern repeat. The numbers in the yellow rectangle show how many times the pattern will be repeated and the numbers in the blue rectangle show the overall number of stitches for the whole row.



6 sts.	x 34	= 204
6 sts.	x 35	= 210
6 sts.	x 36	= 216
6 sts.	x 37	= 222
6 sts.	x 38	= 228

In deciding which option to select, it helps to compare the ideal count in the green rectangle on the drawing with the total number of stitches on the sweater given on the left side of the window. The ideal number of stitches calculated from the length and the tension are shown in the green rectangle.

On the diagram on the right you can see that the ideal number of stitches is 217 stitches. If you select the 204 stitches option, the sweater will be tighter across the shoulders. If you have a stitch count of 13 stitches to 4 inches the sweater will be 4 inches narrower. If you select the choice of 216 stitches, the sweater will be 0.3 inches narrower and if you select 228 stitches, the sweater will be 3.4 inches wider.



Next you select the number of stitches in each pattern repeat on the sleeves.

You can choose to have no pattern. If you select that option, the program will use the ideal number of stitches for the sleeves. It is not possible to use a part of a pattern repeat on the sleeves. You have to use a whole pattern repeat. This limits the possible width of the pattern repeats on the sleeves. Hopefully, a later version of the program will include the possibility of using a part of a pattern repeat at the beginning of the sleeve.

No pattern		
4 sts.	x 8	= 32
5 sts.	x 6	= 30
6 sts.	x 5	= 30
7 sts.	x 4	= 28

Next you select the number of stitches in each pattern repeat on the body.

Here you get the option of having the same pattern as on the sleeves. If you select this option you only have to design the pattern once. It will show up both on the body and the shoulders, provided you selected to have a pattern on the sleeves.

No pattern		
Same as sleeves		
4 sts.	x 34	= 136
4 sts.	x 35	= 140
4 sts.	x 36	= 144
4 sts.	x 37	= 148
4 sts.	x 38	= 152

When selecting the overall number of stitches for body, bear in mind that an increase in the number of stitches on the body will reduce the number of stitches at the top of the sleeves which may not give you enough ease across the shoulders. Try picking a given number of stitches for the body and note how that choice affects the number of stitches at the top of the sleeves. This can be seen on the diagram on the right hand side of the window.

Click on the “Next” button when you have selected the number of stitches in all the different parts of the sweater. The „New pattern“ window will then close and the design will be visible in the main window.

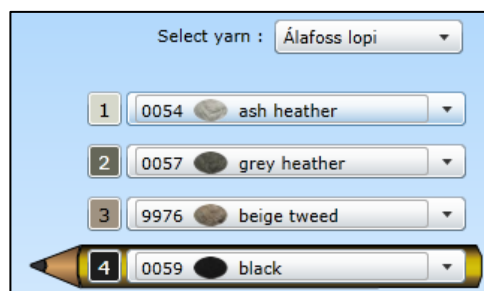
Selecting yarn:

You can choose from 3 color cards: the Icelandic Lopi wool manufactured by Ístex, the Faroese Navia and you also have the option of creating your own colors to use for other yarns. Under the heading of Lopi you can choose from a number of different types of yarn.

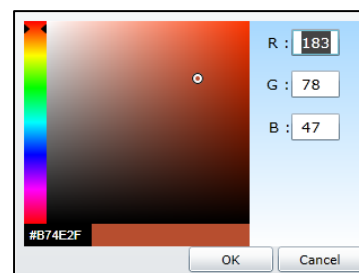


Select colors :

After you select your yarn type ,you can select a color for each pattern slot by clicking on the dropdownlists. You can change the colors at will at any stage. When you draw the pattern you are assigning a particular color to a particular stitch in the pattern repeat. This feature makes it easy to test the effect of different color combinations on the overall design of the garment.

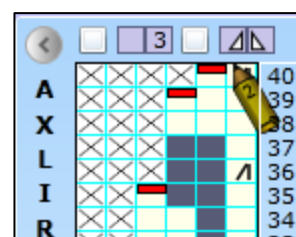


If you choose to use your “own” colors rather than to select colors from the color charts provided by Lopi or Navia, the dropdown lists will be substituted by a button. Clicking the button will open a color picker. You can choose color either by dragging the sled on the left up or down and then drag the circle in the middle area or if you know the RGB values you can key them in the appropriate textboxes. You can see the hex value of the color in the bottom left rectangle and the selected color on the bottom center rectangle. When you have selected the color you hit the „OK“ button.



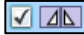
Drawing the pattern:

You select the color for the pencil either by clicking the box with the color number in it or by hitting the corresponding number key on the keyboard. The number of the selected color appears on the pencil. You draw the pattern by clicking inside the boxes or you can hold the mouse button down while dragging the mouse over the boxes.



The rectangles with the cross inside them (“No stitch”) represent the decreases. Their placing is based on an aggregate of many of the patterns in the Lopi booklets. You can move the decreases sideways by moving the mouse pointer over the rectangles until the mouse pointer changes into arrows to the sides, then you click and drag to the sides. You can also change their position vertically by moving the mouse pointer over the red handles until the pointer changes into a vertical arrow, then you click and drag upwards or downwards. But be aware, that by changing the position of the decreases, you are changing the shape of the shoulders, although moving the decreases by a stitch or two is not going to make much difference to the overall shape. You can also make the neck opening wider or narrower at will by increasing or decreasing the number of decreases. Increase them by dragging the red handles at the top down and decrease them by dragging them all the way up. By this you are widening or tightening the neck opening of the sweater. You can move the decrease marker to the left or to the right by clicking on the red handle without dragging.

If the colors you are using are very similar, you can click on the color number in the checkbox by number: 3

If you want to mirror every other pattern repeat, you click on this checkbox: 

Tips:

It is necessary to save the pattern on a regular basis as the program may freeze and unsaved data may be lost. Save often. You save by clicking "File" and then "Save". A standard "Save" window will then open and you choose where to save the pattern and under what name. To open the pattern file, click on "File" and "Open".

Three-dimensional sweater:

You can rotate the sweater and view it from different angles by clicking on it and dragging the mouse with the left mouse button down. By holding the right mouse button down while dragging, you can move the sweater to the right and left or up or down. You can zoom in or out by placing the mouse cursor over the sweater and turning the scroll wheel. In this way you can view the sweater from all angles. You can reset the viewing angle by clicking on the buttons underneath the 3-d sweater image.

You can give the pattern a name by clicking on „Name your sweater" above the sweater and type in a name. By clicking on „Your Name Here" you can type in you name as the designer. In the text box below the sweater you can type a brief description of the sweater. The name of the sweater, the author and the description will all be saved together with the pattern. If you click on the button below the description textbox a "Save" window will open where you can save a picture of the sweater. This feature does not save the pattern itself but only the picture of the sweater.



With this button you open a window which gives all the information regarding the selected measurements and the number of stitches used in the sweater.

Print out the pattern:

To print your pattern, you first need to create a PDF document. Click on "File" and "Create PDF" and a small window will open. If you have previously written the name of the sweater, the designer and a description this information will appear in the window. You may edit this at will. This information will appear in the PDF document. At the bottom left hand corner of the window you can choose whether or not to include the color numbers in the pattern in the PDF document, It is handy to include the numbers if you plan to print the pattern in black and white or if the colors are very similar to each other.

Once you have added all the details, click on "Yes" button. This opens the "Save" window. Here you decide where to save the PDF-document, and under what name. When you click the "Ok" button, the program generates the PDF-document which can take quite some time. When the PDF-document is ready the small "Make PDF" window closes.

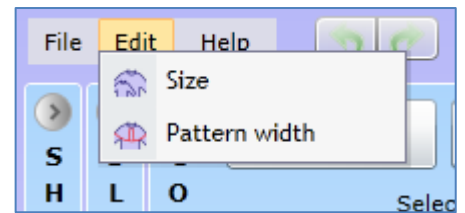
In order to open the PDF-document, you must have an Adobe Reader installed on your computer. You can get a free download on Adobe.com. If



you have Adobe Reader you can open the PDF document by locating it on your hard drive and double click it. Then you can print it out or read it directly from the screen.

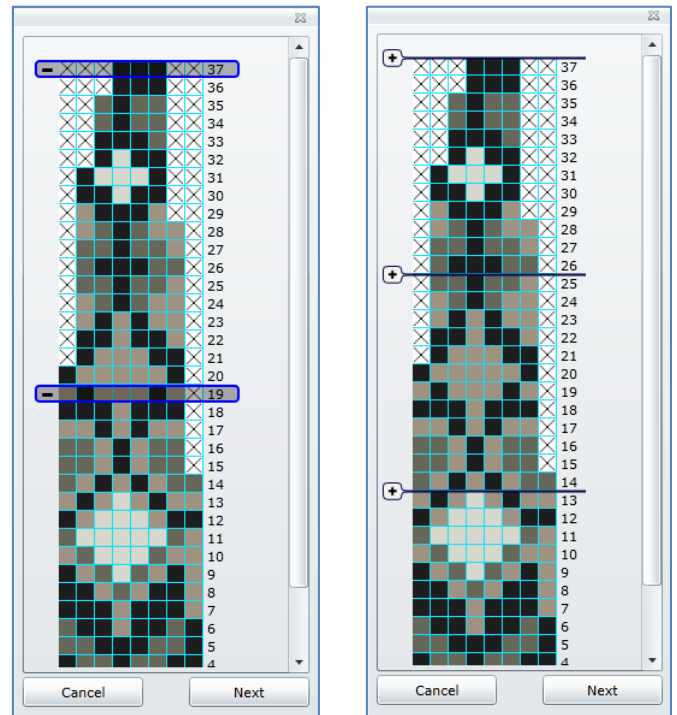
Change size:

You can adjust your pattern to a different size by loading it on the main page and then click on "Edit" and then "Size". Then a new pattern window will open.



Now you can change the size whether you want to change one or all the measurements. When you have the changes you want to make in the measurements, you will have to select the number of pattern repeats to use in each part of the sweater (for the body, the sleeves and the yoke). This function does not allow for changes in the number of stitches in a pattern repeat. It only affects the number of time's a pattern is repeated and that gives you the total number of stitches for each part of the sweater. For reference, check the ideal number of stitches given in the green rectangle on the sweater diagram. When you have finished your selection click on the „Next“ button and a new window will open.

There you will have to position the markers for placement of extra rounds (if you want to make a larger size) or, if you are reducing the size, where you want to skip rounds. You use the mouse to drag the markers up or down to position the increases or the decreases. The markers with the minus sign indicate where rounds will be removed and markers with the plus sign where rounds are added.



When you have position all the markers you click the „Next“ button. Then the window will close and the new size will be loaded in the main window. If you made the sweater larger and added rounds then you can apply the color function to the extra rounds.

About knittingpatterns.is:

Our progress is slow but steady. The program is a one man project carried out in the programmer's spare time. Debugging and troubleshooting is very time consuming and, unfortunately, errors in the program are not always spotted in time. Please help by letting me know of any errors you discover. I greatly value feedback from users of the program so please get in touch at sverrir@knittingpatterns.is.

All suggestions are welcome.

General use of the application

Silverlight:

Knittingpatterns.is uses a browser plug in Silverlight from Microsoft. If you visit knittingpatterns.is and Silverlight is not installed on your computer the server will redirect you to the installation of Silverlight. It is not possible to open the program without installing Silverlight first on your computer. Silverlight is compatible with all PC that run Windows operating systems. Silverlight is compatible with most Mac's. For further information on installing Silverlight visit <http://www.microsoft.com/getsilverlight/get-started/install/default.aspx>



What browser to use:

It can vary between computers which browser works best for knittingpatterns.is if you have any problems try a different browser.



Screen Space:

If you find windows are too small or too large, or you do not have enough space on the screen you can enlarged or reduced content with built-in functions in most browsers. If you are using Internet Explorer, you can reduce or expand the content by holding down the "Ctrl" key while rolling the scroll wheel on your mouse. Also, you can click on the gear icon on the top right corner of the browser and select "Zoom". Similar steps are in other browsers.

Setting the content of the browser to full screen can make all the difference. With Internet Explorer and Google Chrome, you can do this by hitting the "F11" function key. To return to normal view, hit "F11".

Knittingpatterns is heavy in execution:

If you find the program is running slow or the response of the pencil is slow it might be helpful to close all other programs that are running. When I started writing the program I had to choose between having it a traditional applications that users would need to download and install on their computer or to have it as a website. I chose the website because I thought it would have more future as a website. It would have been more responsive and faster as an installed application, but it would be harder to upgrade. A website is easy to upgrade. I hope that in future better technology will improve performance, HTML 5 is becoming a more attractive option, but it is not ready for knittingpatterns.is yet.

File formats:

When you save a recipe, it is saved as a file with .prjon ending and in a format called XML. This is actually a simple text file that can be opened in Notepad. You can send files as email attachments. The recipient can then navigate to knittingpatterns.is and open it there. It is not possible to open the file by double clicking on it.

Facebook <http://www.facebook.com/pages/Knittingpatterns.is/191047577607173>

Twitter <https://twitter.com/#!/prjonamunstur>

Blog <http://prjonamunstur.wordpress.com>

Ravelry <http://www.ravelry.com/groups/knittingpatterns.is>